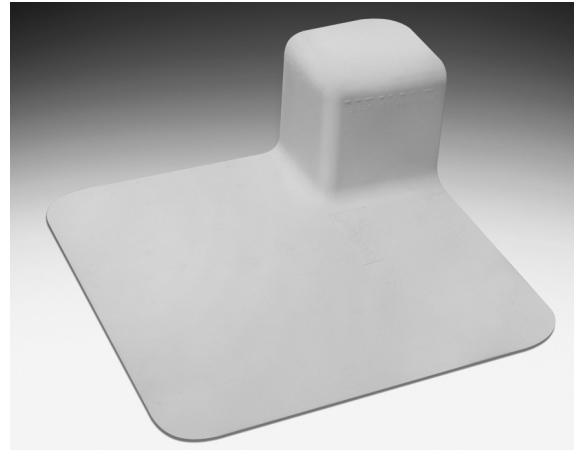


# TremPly® TPO Universal Corner

*A Molded Accessory  
Designed for TremPly TPO  
Single Ply Roof Systems*



## FEATURES

- Cost effective
- Factory-built accessories
- Uniform look
- Same high-heat properties as our TremPly TPO membranes

## BENEFITS

- Reduces installed costs by up to 25% compared to field fabrication
- Improved reliability, reduces risk of leaks and callbacks
- Improved aesthetics
- Proven performance

## DESCRIPTION

TremPly® TPO Universal Corners provide roofing contractors with an easy-to-install, factory-built detail. TremPly TPO Universal Corners are manufactured using a proprietary formulation that is designed for use with Tremco's high-performance TremPlyTPO single-ply membranes.

## BASIC USES

TremPly TPO Universal Corners eliminate the need for contractors to fabricate corners in the field. They are molded from a proprietary TPO formulation engineered to work with TremPly TPO single-ply membranes. TremPly TPO Universal Corners come in one standard size and can be cut for use as either an inside or outside corner reinforcement.

## COLORS

White

## PACKAGING

3" x 3" (76 mm x 76 mm) with 6" (152 mm) flange. Thickness: 0.070" (1.78 mm). 20 Corners per carton; Weight 9 lbs (4.08 kg) per carton; 60 cases per pallet.

## APPLICATION

TremPly TPO Universal Corners are designed for use with TremPly Max TPO and TremPly TPO. They may be installed on TremPly TPO 45, 60, and 80 mil mechanically attached or fully adhered roofing systems or TremPly Max TPO 50, 60, 70, and 80 mil mechanically attached or fully adhered roofing systems. See published application and specifications manual for detailed instructions.

## MAINTENANCE

Your local Tremco Roofing Sales Representative can provide you with effective maintenance procedures which may vary, depending upon specific conditions. Periodic inspections, early repairs and preventative maintenance are all part of a sound roof program.

## PRECAUTIONS

Users must read container labels and Safety Data Sheets for health and safety precautions prior to use.

## TECHNICAL SUPPORT

Your local Tremco Roofing Sales Representative, working with the Technical Service Staff, can help analyze conditions and needs to develop recommendations for special applications.



[www.tremcoroofing.com](http://www.tremcoroofing.com)  
3735 Green Road  
Beachwood, Ohio 44122  
1.800.852.6013

50 Beth Nealson Drive  
Toronto, Ontario M4H 1M6  
1.800.668.9879

Tremco Roofing & Building Maintenance is a part of the Tremco Construction Products Group

Tremco is a US Registered trademark of Tremco Incorporated.  
The information provided on this data page supersedes all previous data concerning this product and its application.  
The Statements provided concerning the materials shown are intended solely as a general guide for material usage and are believed to be true and accurate. Since the manner of use is beyond our control, Tremco DOES NOT MAKE NOR DOES IT AUTHORIZE ANY WARRANTY OF MERCHANTABILITY OR FITNESS FOR ANY PURPOSE, OR ANY OTHER WARRANTY, GUARANTEE OR REPRESENTATION, EXPRESSED OR IMPLIED, CONCERNING THIS MATERIAL EXCEPT THAT IT CONFORMS TO TREMCO'S PRODUCT SAMPLE. Buyer and user accept the product under those conditions and assume the risk of any failure, injury of person or property and loss or liability resulting from the handling, storage or use of the product, whether or not it is handled, stored, used in accordance with directions or specifications. UNDER NO CIRCUMSTANCE SHALL TREMCO BE LIABLE FOR CONSEQUENTIAL OR INCIDENTAL DAMAGES ARISING FROM ANY BREACH OF WARRANTY. IN ALL CASES, TREMCO'S LIABILITY IS LIMITED, AT TREMCO'S OPTION, TO THE REPLACEMENT OF GOODS, OR THEIR VALUE, PROVEN TO BE DEFECTIVE IN MANUFACTURING.